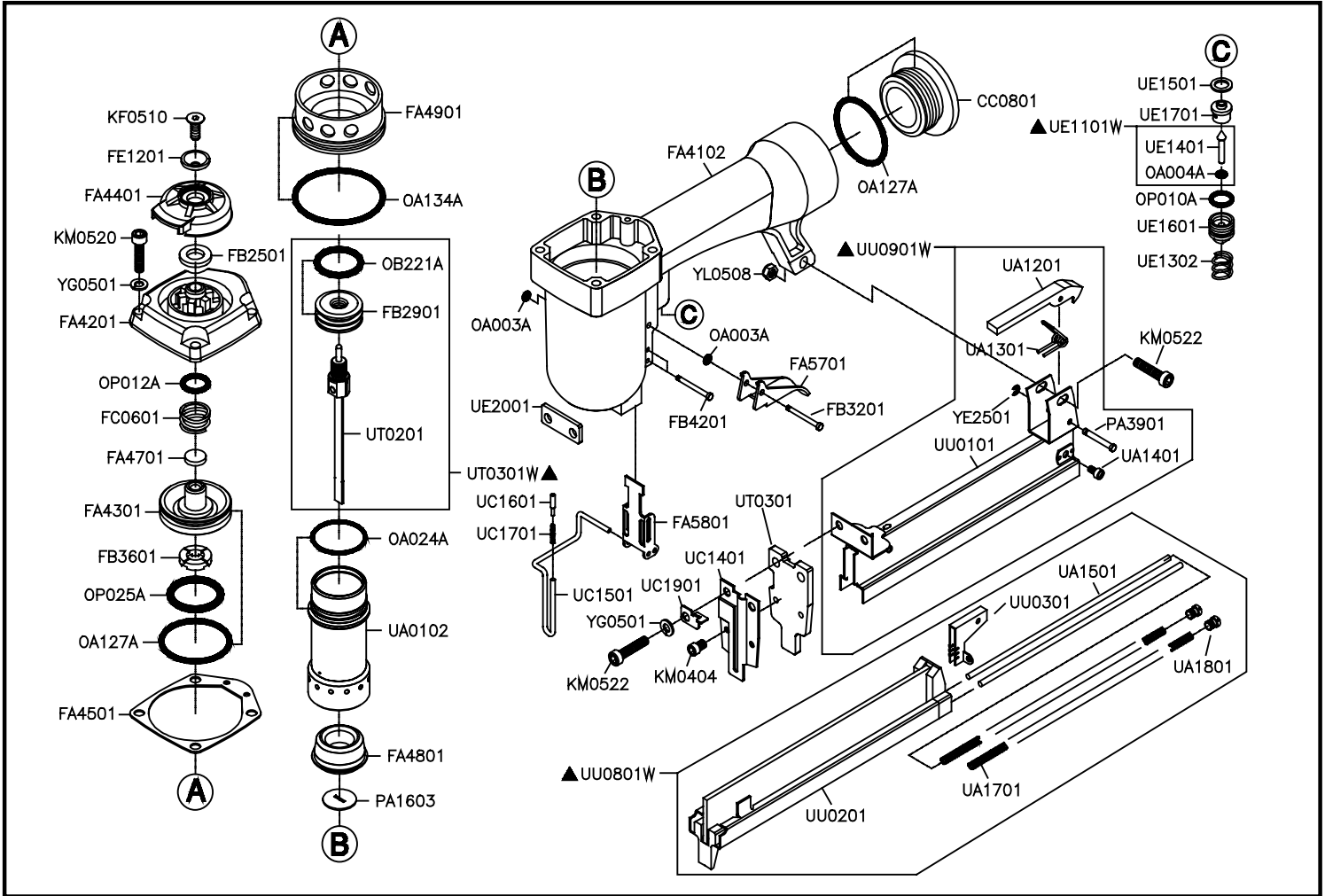


97/25C04 (UU/S2-04)



Part_No	Description	Spec	Q'ty	Part_No	Description	Spec	Q'ty	Part_No	Description	Spec	Q'ty
CC0801	END CAP		1	KM0522	HEX.SOC.HD.BOLT	M5×0.8 - 22L	3	UC1601	SPRING SHAFT		1
FA4102	BODY		1	OA003A	O-RING	ARP568-003	3	UC1701	COMPRESSION SPRING		1
FA4201	CYLINDER CAP		1	OA004A	O-RING	ARP568-004	1	UC1901	SPRING SHAFT STOP		1
FA4301	HEAD VALVE PISTON		1	OA024A	O-RING	ARP568-024	1	UE1101W	TRIGGER VALVE ASSY.		1
FA4401	EXHAUST CAP		1	OA127A	O-RING	ARP568-127	2	UE1302	COMPRESSION SPRING		1
FA4501	CAP SEAL		1	OA134A	O-RING	ARP568-134	1	UE1401	TRIGGER VALVE STEM		1
FA4701	PISTON STOP		1	OB221A	O-RING	22×3	1	UE1501	SEAL		1
FA4801	BUMPER		1	OP010A	O-RING	P10	1	UE1601	TRIGGER VALVE GUIDE		1
FA4901	COLLAR		1	OP012A	O-RING	P12	1	UE1701	TRIGGER VALVE SEAT		1
FA5701	TRIGGER		1	OP025A	O-RING	P25(1A)	1	UE2001	SPACER		1
FA5801	SAFETY(B)		1	PA1603	NOZZLE		1	UT0201	DRIVER ASSY.		1
FB2501	PISTON STOP		1	PA3901	PIN		1	UT0301	COVER PLATE		1
FB2901	MAIN PISTON		1	UA0102	CYLINDER		1	UU0101	MAGAZINE CAP SET.		1
FB3201	PIN		1	UA1201	LATCH		1	UU0201	MAGAZINE ASSY.		1
FB3601	PISTON STOP		1	UA1301	LATCH SPRING		1	UU0301	PUSHER		1
FB4201	PIN		2	UA1401	RETAINER SCREW		2	UU0801W	MAGAZINE SEAT ASSY.		1
FC0601	COMPRESSION SPRING		1	UA1501	GUIDE STEM		2	UU0901W	MAGAZINE CAP ASSY.		1
FE1201	EXHAUST CAP RING		1	UA1701	PUSHER SPRING		2	YE2501	E-RING	2.5	1
KF0510	FLAT HD.BOLT	M5×0.8 - 10L	1	UA1801	HEX.SOC.SET SCREW		2	YG0501	SPRING WASHER	5	6
KM0404	HEX.SOC.HD.BOLT	M4×0.7 - 4L	2	UC1401	SAFETY GUIDE		1	YL0508	LOCK NUT	M5×0.8	1
KM0520	HEX.SOC.HD.BOLT	M5×0.8 - 20L	4	UC1501	UPPER SAFETY		1				

If you need to order parts, please mark both Parts No. and Description.